

# SW report #1: How to build GPRS connection

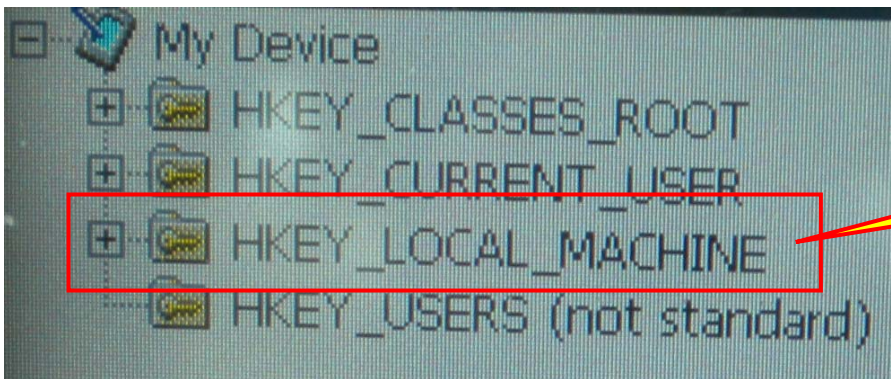
Device: CTFPND-5

## 1. Registry setting modification:

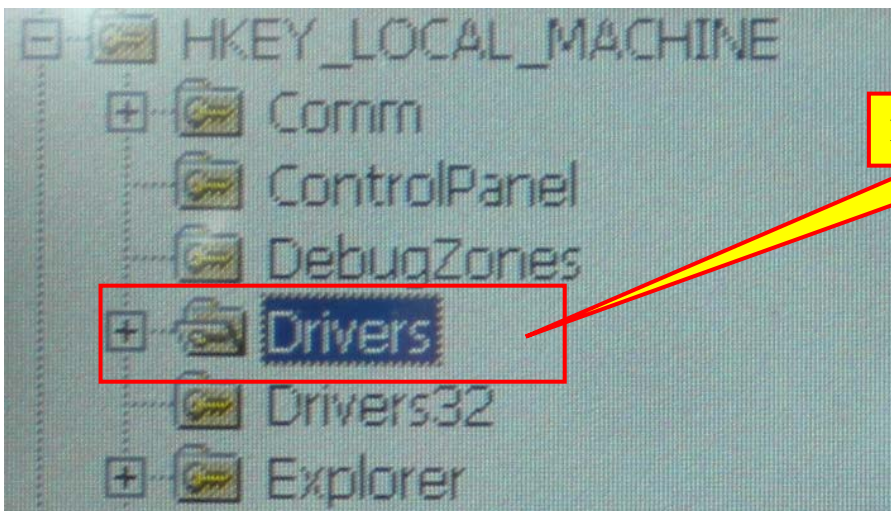
STEP1: Move into folder “Device\Windows” and Execute “regedit.exe”.



STEP2: Move into “HKEY\_LOCAL\_MACHINE\Drivers\Unimodem” by below operations:

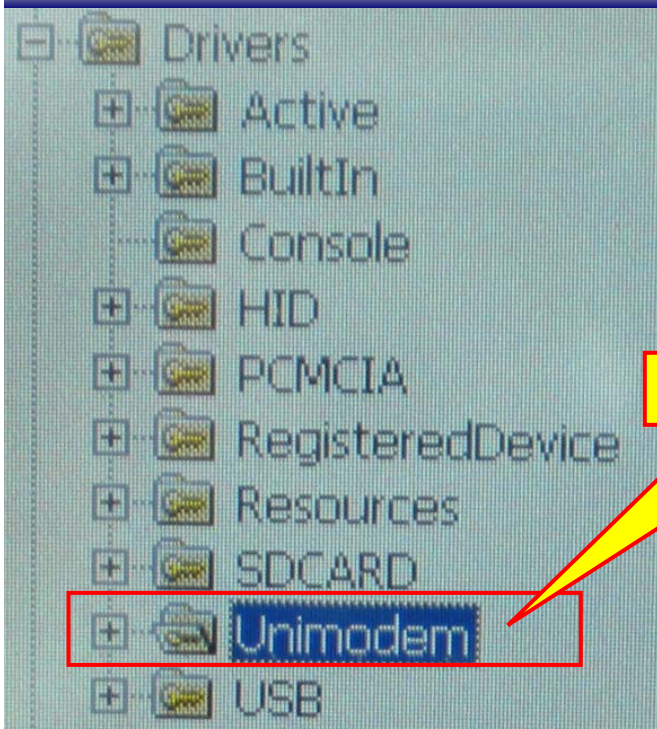


Left click  
“HKEY\_LOCAL\_MACHINE”



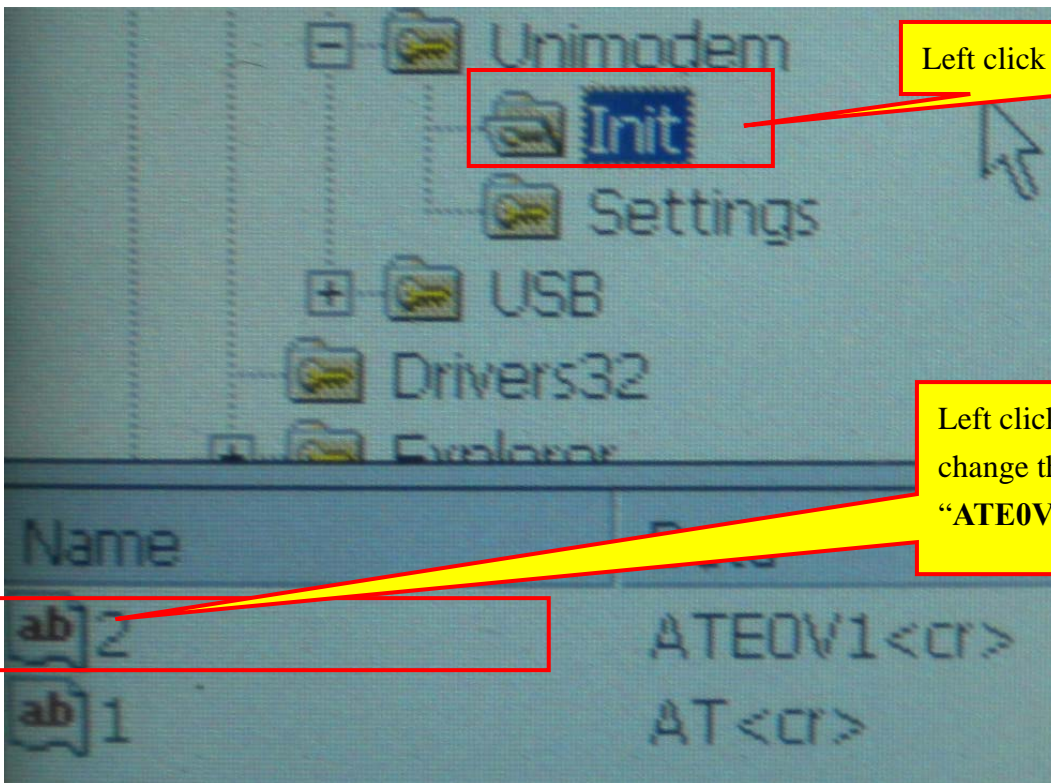
Left click “Drivers”

**SR#1: How to build GPRS connection**



Left click "Unimodem"

**STEP 3:** Select "Init" and set key "2" to "ATE0V1<cr>".



Left click "Init"

Left click here and then change the value to "ATE0V1<cr>"



SR#1: How to build GPRS connection

STEP 4: Select "Setting" and set key "CallSetupFailTimeout" to "AT<cr>".

Name	Data
ab CallSetupFailTim...	AT<cr>
ab Prefix	AT
ab Terminator	<cr>
ab DialPrefix	D
ab DialSuffix	;
ab Pulse	P
ab Tone	T
ab Blind_Off	X4
ab Blind_On	X3
ab Reset	ATZ<cr>

## 2. Build GPRS connection

**STEP1:** Move into “Device\Control panel” and double click “Network and Dial-up Connection”.

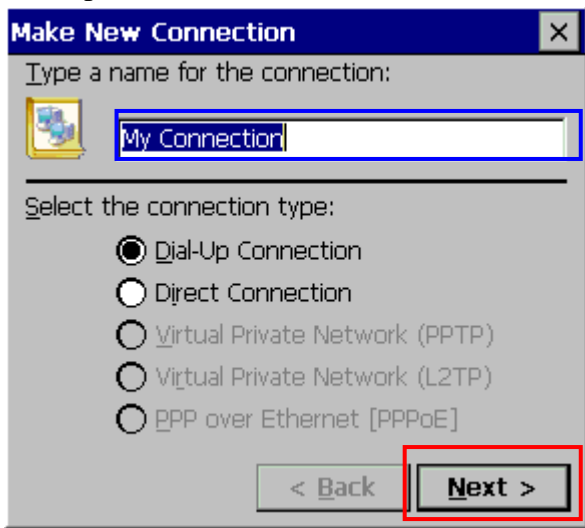


**STEP2:** Double click “Make New Connection”

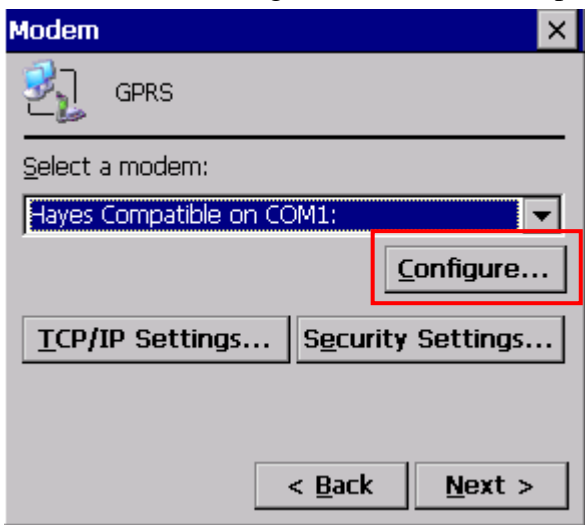


**STEP3:** Setup a new connection by below procedures:

(1). Input the name of new connection and click the “Next” button.

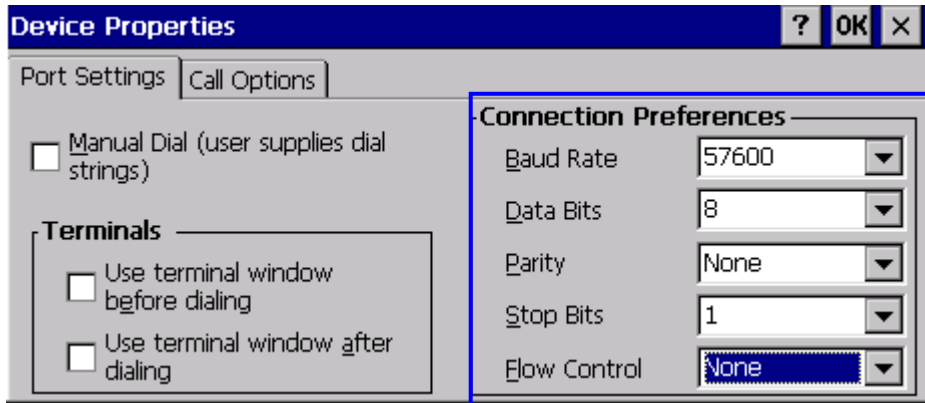


(2). Click the “Configure...” button to setup the parameters of COM port.

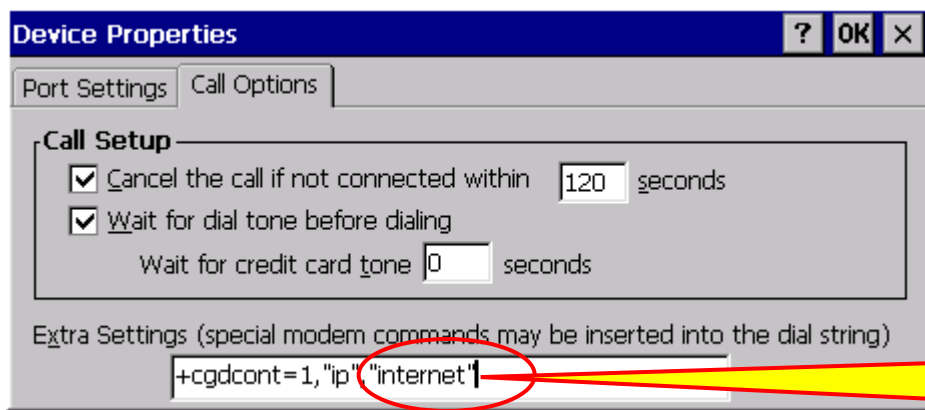


### SR#1: How to build GPRS connection

(3).Set the port parameters as below:

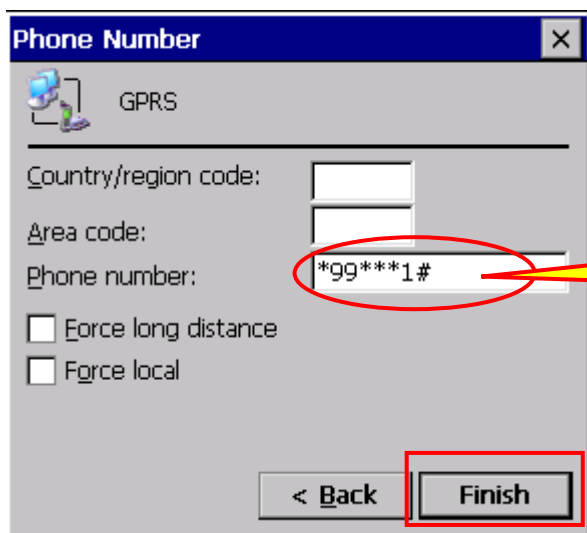


(4).Change to the “Call options” page and input the “Extra settings” field. User need to confirm the value with your service provider. After setting the extra modem command, click the “OK” button, return to the “Modem” dialog shown at procedure (2) then click the “Next” button.



Please confirm this value with your service provider.

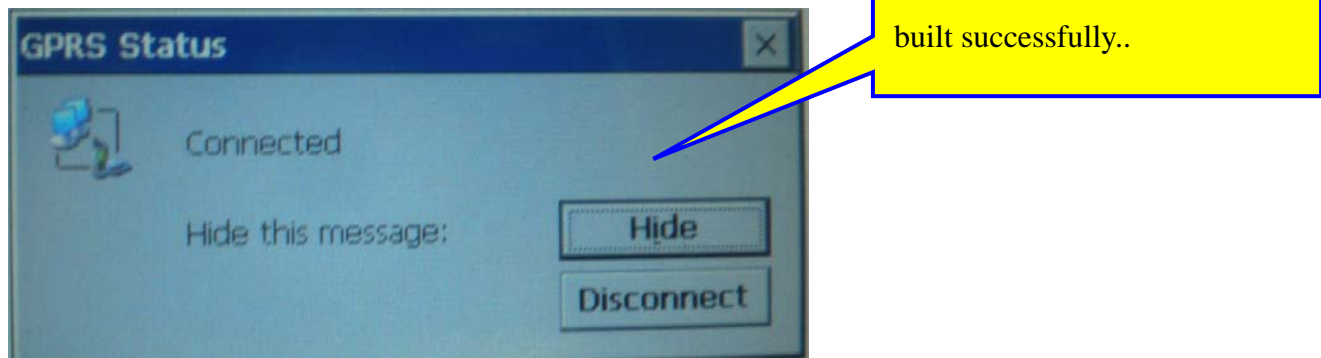
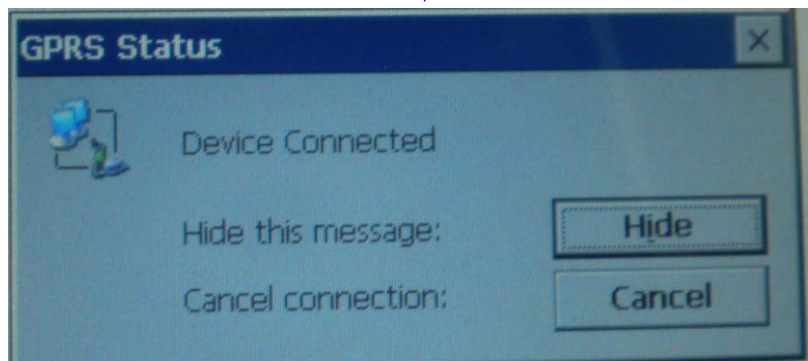
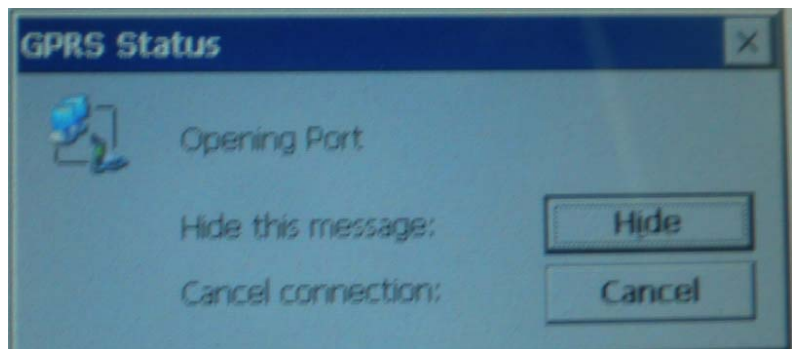
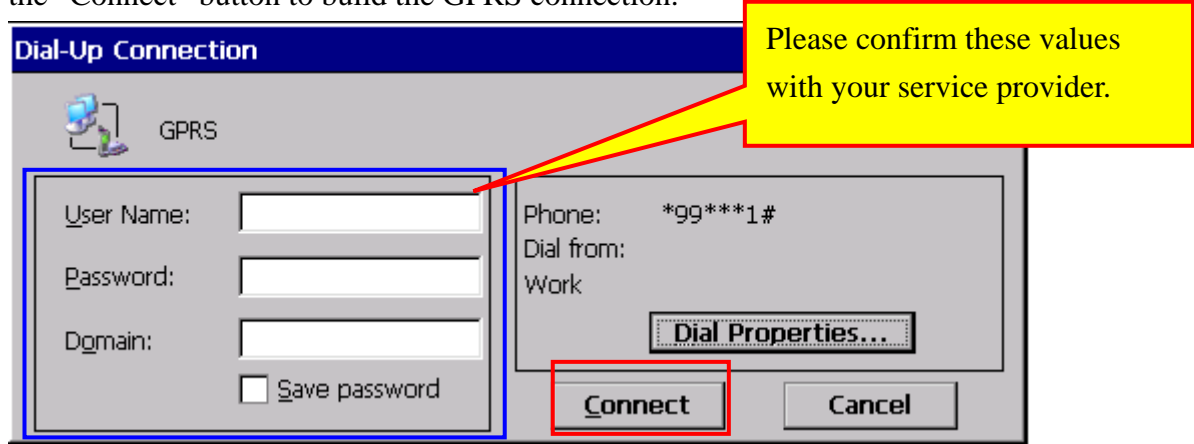
(5). Clear the “Country/region Code” and “Area code:”. Input the “Phone number” of GPRS service. Please confirm this phone number with your service provider. After input phone number, click “Finish” button.



Please confirm this value with your service provider.

**SR#1: How to build GPRS connection**

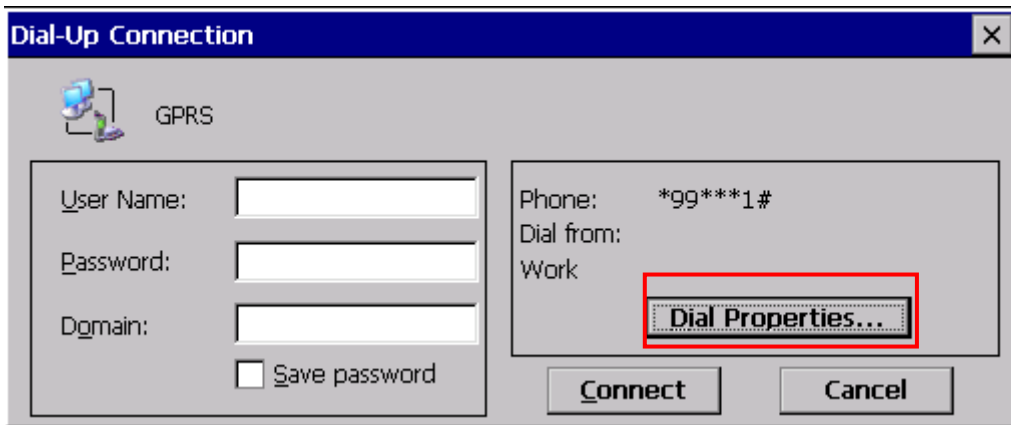
**STEP4:** Double click the connection you just built. Input the user name and password if necessary. Click the “Connect” button to build the GPRS connection.



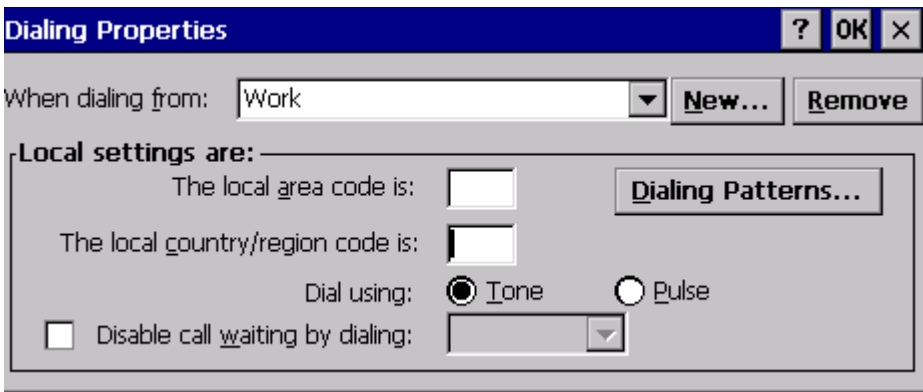
## SR#1: How to build GPRS connection

**NOTE:** If the GPRS connection could not be built after finishing all steps above, please try following setting:

(1). Click “Dial Properties...” button`



(2). Clear the “Country/region Code” and “Area code:”. Click “Dialing Patterns...”



(3). Change the values of all field to “G” as below pictures. After finish setting, click the “OK” button, return to the “Dial-Up Connection” dialog and then click “Connect” button to build GPRS connection.

